



Liceo Sorolla
International School

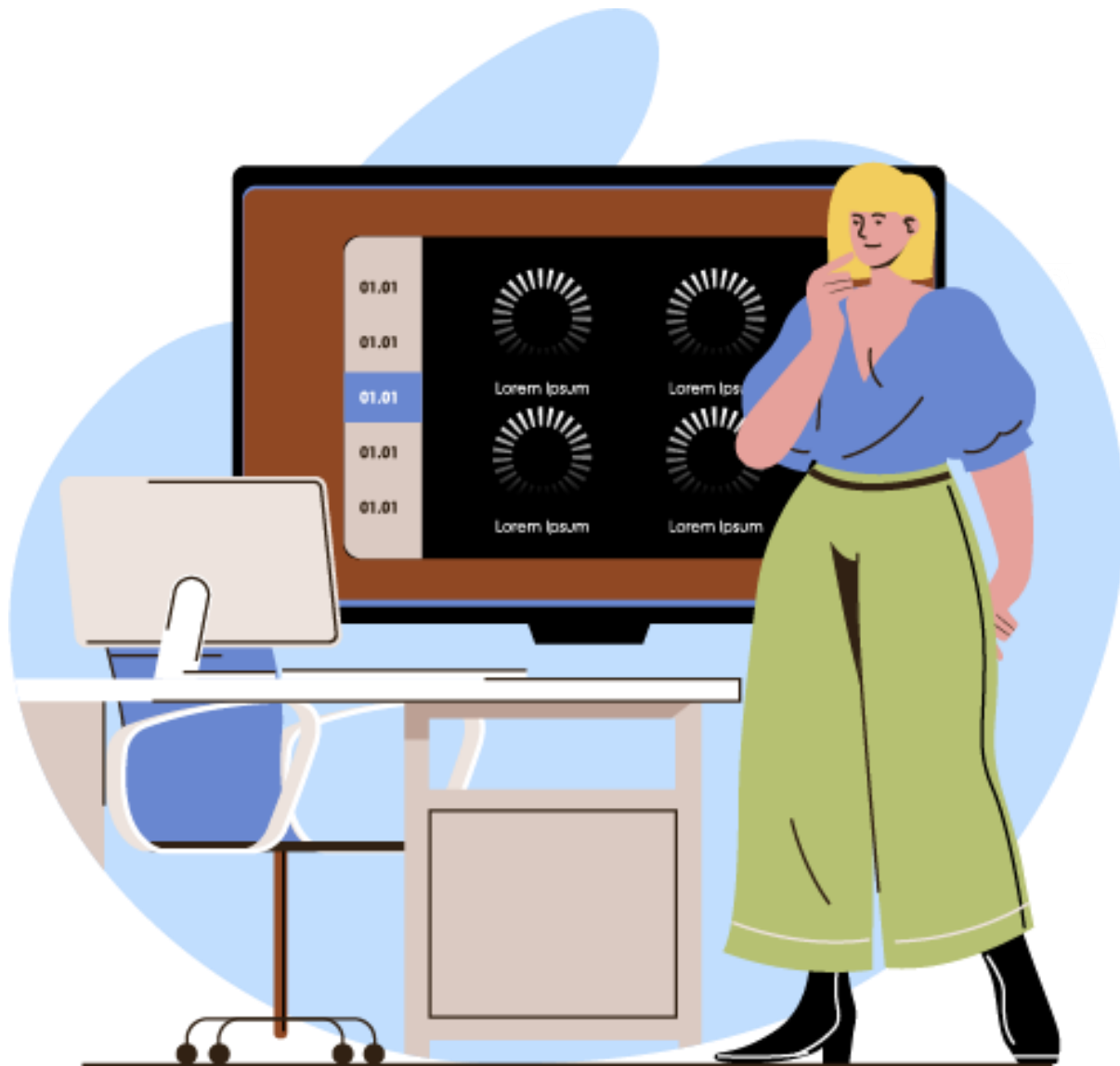




Liceo Sorolla
International School



IB: DIPLOMA PROGRAMME (DP)



GENERAL INFORMATION DP

It is a two year course, for students in 1st and 2nd grade Baccalaureate.

There is both internal (approx. 20%) and external assessment (approx. 80%).

Ib provides an excellent education, and if the student passes there is no need to sit the Spanish Baccalaureate exam to access university.

Wide recognition in Spain and abroad.

THE IB LEARNER PROFILE



Liceo Sorolla
International School



Inquirers



Knowledgeable

Balanced



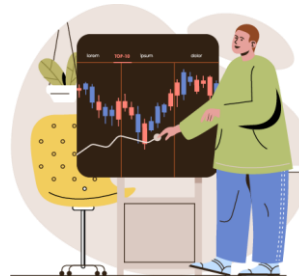
Thinkers



Risk-takers



Communicators

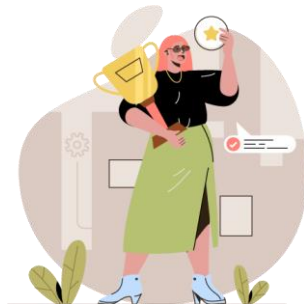


Reflective

Caring



Principled



Open-minded



SUBJECTS

Divided into the following 6 subject groups:

- Studies of own language and literature.
- Foreign language.
- Individuals and societies.
- Sciences.
- Mathematics.
- The arts.

There are different courses within each subject group and they choose one from each group. A total of 6 subjects:

- 3 at a Higher Level (240h)
- 3 at Standard Level (150h)

CORE ELEMENTS

- TOK, Theory of Knowledge
- CAS, Creativity, Activity and Service
- The extended essay



CORE ELEMENTS



Liceo Sorolla
International School

Theory of Knowledge

Interdisciplinary subject that invites students to reflect on the nature of knowledge.

Invites students to reflect and promotes critical thinking.

Express points of view, share ideas, listen and learn about how other people think.

Students write an essay of between 1200 – 1600 words from an essay title issued by IB.

Students do an oral presentation.

Students are capable of formulating questions, explanations, speculations, hypotheses, ideas, alternatives and answers to questions about knowledge.



CORE ELEMENTS

Creativity, Activity and Service, CAS

Experiences that involve creative thinking.

Physical activities that involve an effort or a challenge and contribute to achieving a healthy lifestyle.

Voluntary service that must be beneficial for the community as well as providing a learning opportunity for the student or an activity that helps a student overcome a personal fear.

The project can be local, national or international.

The activities must be planned and include a progress report.



CORE ELEMENTS



Liceo Sorolla
International School

The extended essay

It's one of the major achievements of the IB Diploma, a required component of the Diploma programme.

Guided by a teacher from the school over the two year programme.

An essay structured around a research question to research with a maximum of 4,000 words.

Familiarize the student with skills need to carry out resesarch, use original sources, develop writing skills and creativity.



INTEGRATED BACCALAUREATE

COMPLEMENTED by the subjects required to acquire the Spanish Baccalaureate with any of the specialisations.

PROGRAMA DEL DIPLOMA DEL BACHILLERATO INTERNACIONAL			
MATERIAS	LENGUA A: LITERATURA	NS	
	LENGUA B: INGLÉS	NS	
	HISTORIA	NS	NM
	EMPRESA Y GESTIÓN	NM	
	BIOLOGÍA	NM	
	MATEMÁTICAS: Análisis y enfoques NS; Aplicaciones e interpretación NM	NS	NM
			(Materias comunes a los dos años. Elegir nivel superior o medio en Historia y Matemáticas)
C. TRONCALES	TEORÍA DEL CONOCIMIENTO, TdC CREATIVIDAD, ACTIVIDAD Y SERVICIO, CAS MONOGRAFÍA		(Finaliza el primer trimestre del segundo año)
MATERIAS QUE COMPLETAN PARA OBTENER EL BACHILLERATO NACIONAL			
	I. CIENCIAS		I. HUMANIDADES Y CIENCIAS SOCIALES OPCIÓN: CIENCIAS SOCIALES
PRIMER AÑO	EDUCACIÓN FÍSICA FÍSICA Y QUÍMICA DIBUJO TÉCNICO I (Opcional)		EDUCACIÓN FÍSICA LITERATURA UNIVERSAL
	TECNOLOGÍA DE LA INFORMACIÓN Y LA COMUNICACIÓN I SEGUNDA LENGUA EXTRANJERA: FRANCÉS I		(Elegir una materia)
SEGUNDO AÑO	FÍSICA QUÍMICA DIBUJO TÉCNICO II (elegir un máximo de dos materias)		GEOGRAFÍA HISTORIA DEL ARTE FILOSOFÍA (elegir un máximo de dos materias)
	TECNOLOGÍA DE LA INFORMACIÓN Y LA COMUNICACIÓN II SEGUNDA LENGUA EXTRANJERA: FRANCÉS II		(Elegir una materia)

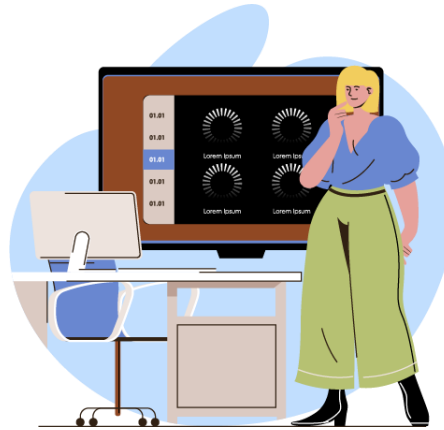


Liceo Sorolla
International School

ADVANTAGES



Liceo Sorolla
International School



Core elements are an essential complement for the demands of any higher education training course.

Methodology, encourages students to be independent, learn how to work in a team and acquire the communication, research and critical thinking skills to ensure future success.

International recognition.

Students do not need to do the Spanish EvAU test to access university.

ASSESSMENT



Internal

Graded by teachers from school and the practical part of the subjects is moderated externally (20%).

External

Written examinations prepared and assessed by IB (approx. 80%)



CANDIDATES



The selection process

- ✓ Introductory letter
- ✓ Essay

PAST YEARS GRADES



Liceo Sorolla
International School

The highest score for the IB Diploma Programme is 45 points.

May 2018

Average score of 36. Best grade obtained by our students was 40 points.

Average score was equivalent to the Spanish Baccalaureate EVAU test and ongoing assessment: **8.833** (UNED examining board).

May 2020

Average score 34. Best grade obtained by our students was 42 points.

Average score equivalent to the general phase of the Spanish Baccalaureate EVAU test and ongoing assessment: **8.489** (UNED examining board).

May 2019

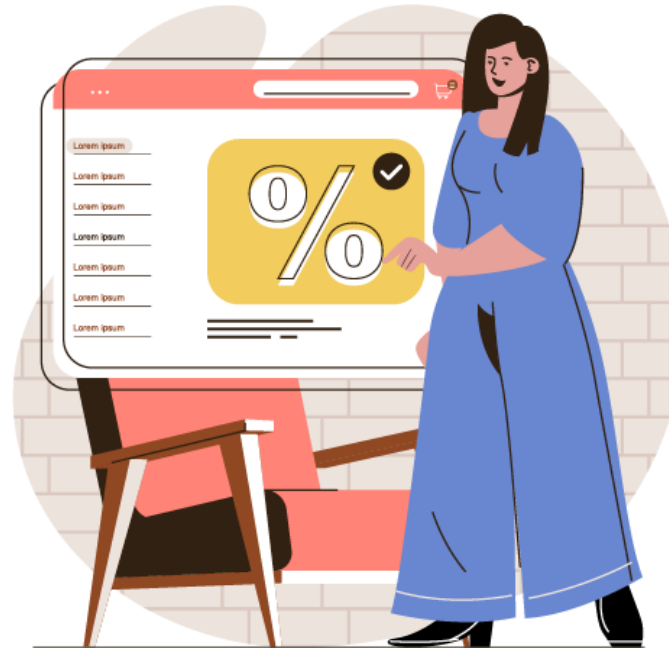
Average score of 36. Best grade obtained by our students was 37 points.

Average score equivalent to the general phase of the Spanish Baccalaureate EVAU test and ongoing assessment: **8.600** (UNED examining board).

May 2021

Average score 37. Best grade obtained by our students was 43 points.

Average score equivalent to the general phase of the Spanish Baccalaureate EVAU test and ongoing assessment: **8.89** (UNED examining board).



GRADING



Liceo Sorolla
International School

The maximum score for the Diploma Programme is 45 points.

- 7 points per subject.
- 3 points for the core elements.

The Diploma is awarded to students who obtain at least 24 points.

Once the student has the Diploma Programme the equivalent for accessing Spanish university is shown in the table below:

Puntuación IB	Fórmula de trasposición	Ce
7	$\frac{5+(7-2) \times 5}{(7-2)}$	10
6	$\frac{5+(6-2) \times 5}{(7-2)}$	9
5	$\frac{5+(5-2) \times 5}{(7-2)}$	8
4	$\frac{5+(4-2) \times 5}{(7-2)}$	7
3	$\frac{5+(3-2) \times 5}{(7-2)}$	6
2	$\frac{5+(2-2) \times 5}{(7-2)}$	5

In order to increase the grade up to 14 points, as if it was the specific phase of the Spanish EvAU test, there are two options which are not mutually exclusive:

- Sit exams for certain subjects with the UNED examining board.
- Request individual recognition for subjects studied during the IB Diploma Programme.





Liceo Sorolla
International School
Being a Sorolla student is for life